



INSTRUCTIONS
FOR USE

TRIARC
LABELLING SYSTEMS



ASSEMBLE DISPENSERS TOGETHER

- The spine sections press fit together on the four pins at the top and bottom of each unit
- Make sure they are firmly pushed together



TAKE DISPENSERS APART

- Holding front and back of dispenser unit in the middle pull apart **EVENLY** in line with the pins



LOADING DISPENSER STEP 1

- Slide out the cassette module from the spine section using your thumb and forefinger
- Load new roll from back of cassette, with maximum roll diameter 110mm



STEP 2

- Leave backing tape out for non-peeling mode
- Thread backing tape down and through the front top slot for auto peel mode



STEP 3

- Slide cassette back into spine section where it should click into position





FREE STANDING STACKABLE

- Can be left free standing and are stackable vertically, we recommend fixing with strong double sided tape



WALL MOUNTED

- Can be wall mounted through the slots in the spine section (fixings not supplied)

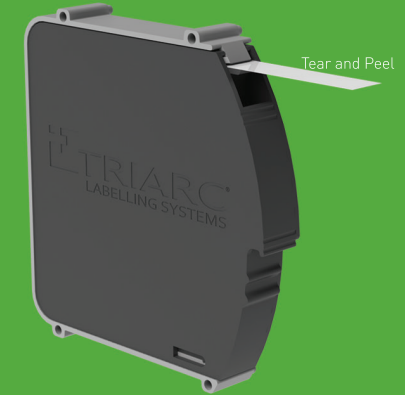


wall mount slot



TEAR AND PEEL

- Tear and peel in non-peeling mode by holding your finger on the label and ripping the backing tape off on the top tongue



BACKING TAPE PRESS AND PULL

- Press in the middle of the nodules at the front of the dispenser to get the backing tape to protrude out



EASY IDENTIFICATION

- Area on front of dispenser to display label sample for easy identification



STACK MOUNT EXPAND

0800 TRIARC (874272)

www.triarc.co.nz

P: 06 878 5420

E: sales@triarc.co.nz

